

The Virtual Laboratory

Max-Planck-Institute for the History of Science, Berlin
ISSN 1866-4784 - <http://vlp.mpiwg-berlin.mpg.de/>

[Stumpf, Carl]. n. d. [Envelope] 6. Formantentabellen. (Ethnologisches Museum Berlin SPK, Phonogramm-Archiv: Stumpf Papers - [Envelope] 6. Formantentabellen)



6

Formenlehre der Tabellen

von A. N. K. A. A.

X

6

X

Krel 14. April No. 21.
Psychologisches Institut
der Univ. zu Berlin.

Nagel 782

	Fantus	Helm	Rö haerb	(mass)	Henn. 1890	Papp	Hennig vs	Boeke	Samojl.
A	b p	b p	b p		#	# #	#	# #	- +
E	# +	guc b d #	guc b p		guc f - +	# # #	guc +	guc +	guc - # +
J									

Ober Ton
er of
cis³ - f⁴
(Boeke)
1 1/2 Oct

Handwritten musical score for a piece titled "Zweardunke, Exp B". The score is written on ten staves, each labeled with a name: Pipping, Boole, Fern, Samojl, Krschur, Berier, Raps, Serwin, and Pilsau. The notation includes various musical symbols such as clefs, notes, rests, and dynamic markings like "p", "f", and "gva". The piece is divided into five measures across the page.

Zweardunke, Exp B
 p 205
 Rühl
 nach dem
 Gutman
 p 109

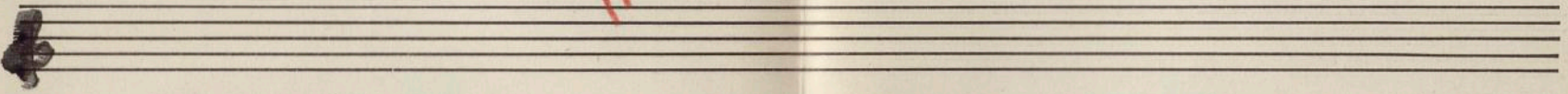
Ergänzung: Doudes, Helmb, König, Gutman 1. u. Gutman 111
 Vgl. Nasel 782

~~Ten~~

in c³ (Köhler) bei 2/

Obere Formant für die vi³ (Laut) n. f4 (Bocke nach Kraus), v. 1 1/2 (Oel
Aust. d. v. einzigen Ten zu g¹ = a¹, u. d. 2-9, 2-11 (Laut) v.

~~U~~



16 17

guy

über 2 Oktaven!

Stwa
bei
Nagel

v. L'waard.

1. Donders 2. Helmh 3. Köh. 4. Aust. Post. 5. Pippas (var!) 6. Herr 1905 7. Boeke 8. Samojl.
Herr. 1890
9. Aust. (Petersen - rz) Herr. (A/V L'waardem. 14, 26 Samojl. 10. Herr 11. Samojl. 12. Vershöer 13. Raps
14. Stevan 15. Delsaux - Quil 16. Köhler 17. Gutz

Handwritten musical notation on two staves. The top staff (A) has a treble clef and contains notes with various accidentals and fingerings. Above it are diagrams of guitar fretboards with notes marked. The bottom staff (U) has a bass clef and contains notes with fingerings 1-12. Annotations include "Köhler", "Tempo 13x", "12x", "13a", "14a", "14", "15", and "15". To the right, there are notes: "1 1/2 Oct" and "1 1/2 Oct ohne F, 2 p/b 2."

Handwritten musical notation on two staves. The top staff (U) has a bass clef and contains notes with fingerings 1-15. The bottom staff (G) has a treble clef and contains notes with fingerings 1-15. Annotations include "13", "14", "15", "10", "11", "12", and "13". To the right, there are notes: "ofun", "F:", "b - 2, 3", "= p/b 1/2", and "at".

(Nagel) 1. Dant 2. Klat 3. Wän 4. Anette (prob) 5. Pappa 6. Hem 1905 7. Back 8. Samajl.
 6. Pippins

(Zwaard) (10 Pippingli) 11. Hem 12. Visscher 13. Raps 14. Stevani 15. Draus-Cuis
 über nicht mit 6.

2 Guten 3 var sona 2 u 2 u Köhler

Helmholtz.

Handwritten musical notation for Helmholtz's vowel chart. The notation is written on a five-line staff with a treble clef. The notes and chords are arranged in a way that corresponds to the vowel chart. The notes are: *u*, *o*, *A*, *Ä*, *ε*, *F*, *ö*, *ü*. Above the notes are chord diagrams and some notes are marked with *gra* and *8 va*. The chord diagrams are: *u* (E2, G2, B1), *o* (E2, G2, B1), *A* (E2, G2, B1), *Ä* (E2, G2, B1), *ε* (E2, G2, B1), *F* (E2, G2, B1), *ö* (E2, G2, B1), *ü* (E2, G2, B1). The notes *u*, *o*, *A*, *Ä*, *ε*, *F*, *ö*, *ü* are written in a stylized, handwritten font. The notes *u*, *o*, *A*, *Ä*, *ε*, *F*, *ö*, *ü* are written in a stylized, handwritten font. The notes *u*, *o*, *A*, *Ä*, *ε*, *F*, *ö*, *ü* are written in a stylized, handwritten font.

A

Nagel 782

1 2 3 4 5 6 7 8 9

10 11 12 13 14 15 16

Bst + Trich = 1/20A

Nagel { 1. Dsch. 2. Kuhn 3. Kuhn 4. Auerb 5. ~~...~~ 6. Henning 7. Pizzi 8. Baeker 9. Lamschl.

Zevand : 10. Pizzini 11. Boeke 12. Verschuier 13. Kerier 14. Raps 15. Strani 16. Delvaux

Delvaux